

# FALL NEWSLETTER



Children's  
FRIEND

ChildrensFriendRI.org

## GRAND OPENING OF OUR NEW EARLY CHILDHOOD CENTER OF EXCELLENCE



David Caprio, President and CEO of Children's Friend; John Cregan, Chairman, Children's Friend Building Committee; Congressman David Cicilline; Michael DiSandro, Chairman, Children's Friend Board of Directors; Providence Mayor Jorge Elorza, Children's Friend Policy Council Treasurer Naomi Stanley (with son Walter Stanley); Inilda Vaz, Vice Chair of the Children's Friend Policy Council; Mary Kay Harris, Deputy Majority Leader and Councilwoman for Ward 11; Governor Gina Raimondo; Sabina Matos, Providence City Council President; Congressman James Langevin; and Sokha Sen, Althea Center neighbor.

On Friday, September 6, 2019, Children's Friend celebrated the grand opening of its new Early Childhood Center of Excellence located at 70 Union Avenue in Providence.

This new state-of-the-art facility offers Head Start, Child Care, Family Visiting, mental health, and professional development services.

Formerly the Althea Street School and Asa Messer Annex, the Early Childhood Center of Excellence has partnered with West Side Play Space to offer a dedicated play space for families in the neighborhood.

This dilapidated and unsafe building in the West End of Providence was gutted and refurbished in just over a year. Now, with a new beginning, the rehabilitation of this historic school, where generations of children filled the classrooms, has brought a reinvigorated energy and excitement to the community.

Mr. Caprio stated, "This was a complicated and challenging

project not unlike the work that we do every day at Children's Friend." He added, "In the end, this is exactly what we need to do in a place we need to be."

*One of our new students was so excited he couldn't wait for the first day of school.*

*He attended the grand opening with his Mother.*



Follow us on social media.



ChildrensFriendRI



CFRI1834



childrensfriend



# LETTER from the PRESIDENT

Dear Friends,

Summer has sadly come to an end and our thoughts turn to the season of autumn. Our days of having fun at the beach or at a family cookout will now be

spent raking leaves and preparing for the holidays.

This is a special time of year when we reflect upon our lives and give thanks. Specifically, I give thanks for our many generous sponsors, donors and volunteers who unselfishly give of their time, talent and treasure which enables Children's Friend to continue our mission to improve the well-being and healthy development of Rhode Island's at-risk children.

With the end of summer also comes the end of our very successful Summer Learning & Enrichment Program at Children's Friend.

This program continues to be tremendously effective by ensuring that children are academically prepared within developmental areas such as language, math, science, creative art as well as physical development.

It is so comforting to know that children with the greatest need are receiving significant attention whether they are preparing for kindergarten or returning to our Head Start classrooms in the fall.

The start of school for our many students is even more exciting this year with the grand opening of our newest Children's Friend Early Childhood Center of Excellence located in the West End of Providence.

The once vacant and dilapidated building is now a state-of-the-art facility where our children will receive a first-rate education in a safe, caring and nurturing environment. At this Althea Street site, a variety of programs including Head Start and Child Care will be provided to assist families and help to revitalize an area that has one of the highest poverty rates in the state.

On behalf of our Board of Directors and staff, children and families, thank you for your investment in our work.

David Caprio  
President and Chief Executive Officer

## A RICH HISTORY • A SUCCESSFUL PRESENT • AN IMPORTANT FUTURE



### *Planned Giving at Children's Friend*

Over the past decade Children's Friend has provided services for over 300,000 individuals. With so many children and families in need, we must be diligent about preparing for the future.

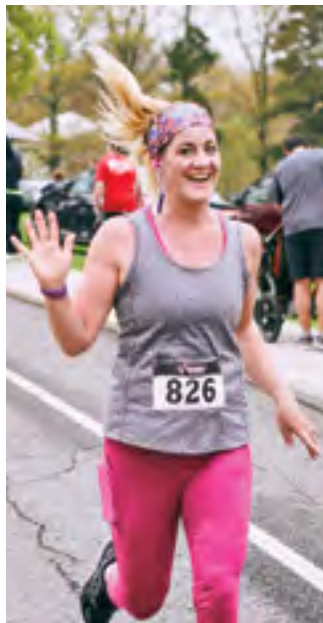
Investing in the children of tomorrow can be rewarding and easy. You can choose to participate in planned giving through the Harriet Ware Society and protect generations to come.

For more information on planned giving and the Harriet Ware Society, contact Joyce LaFrance Tormey, Planned Giving Coordinator, at 401.276.4318 or [jtormey@cfsri.org](mailto:jtormey@cfsri.org).



# 2019 5K WALK & RUN

Sponsored by Panera Bread



**The force was strong with Children's Friend and all of our friends on Saturday, May 4<sup>th</sup> at the 5K Walk & Run sponsored by Panera Bread!**

Volunteers from Old Navy, Centreville Bank, and the Rhode Island Municipal Police Training Academy did a spectacular job transforming the Roger Williams Park Temple to Music into a fairground of activities for all ages.

Our title sponsor and partner in this event, Panera Bread, provided breakfast and lunch to all and also supported the 5K Walk & Run through their incredible pre-event fundraising efforts in 12 local cafés. Thanks to those efforts, Panera Bread presented us with a \$20,000 check.

Case Closed Generations Dance Crew, The High Altitude Jump Rope Team, The Unlikely Strummers and Storm Troopers and other costumed characters from the 501<sup>st</sup> New England Garrison were on hand providing entertainment all day.

We want to thank everyone who attended, donated to, volunteered for, and sponsored this crucial fundraiser. Your efforts make our work possible.

**We can't wait to see you next year on Saturday, May 9, 2020!**

## THANK YOU TO OUR 2019 SPONSORS!

### TITLE SPONSOR



### PLATINUM SPONSOR



### GOLD SPONSOR



### SILVER SPONSORS



### BRONZE SPONSORS

Carousel Industries  
HERFF JONES  
THE HIRE  
INNOVEX  
Lakeshore® Learning  
New England Pension Plan Systems LLC  
Partridge Snow & Hahn LLP  
Starkweather & Shepley Insurance Brokerage Inc.  
TUFTS Health Plan  
Vision 3 Architects

Mark your calendar for next year's Walk: Saturday, May 9, 2020 at Roger Williams Park.

# 185<sup>th</sup> ANNUAL MEETING



Board Secretary Marie Ganim, Board Chairman William J. Allen, and President and CEO, David Caprio.

Our 185<sup>th</sup> Annual Meeting was held on Thursday, June 6<sup>th</sup> with staff members, our Board of Directors, and a few special guests.

Board Chairman William J. Allen opened the meeting by thanking staff for their dedication and the wonderful work they do each day as a precursor to a yearly tradition - giving out employee service awards to those employees who achieved milestone anniversaries. Mr. Allen and President and CEO David Caprio distributed service awards to 125 employees, with cheers and applause from the audience.

To commemorate Mr. Allen's last annual meeting as Board Chairman, Mr. Caprio and Marie Ganim, Board Secretary, presented Mr. Allen with a golden gavel as a token of our thanks for his work as Chairman for the last three years.



President and CEO David Caprio, Board Chairman William J. Allen, and Mr. Lee Grossi.

The highlight of the meeting was the presentation of the Michelle Norris Memorial Award. This award is presented annually to an individual or organization that has been exceptionally helpful and supportive of the mission of Children's Friend. This year's honoree was Mr. Lee Grossi.

A former employee of Children's Friend, with a long history of service to the State of Rhode Island and its vulnerable children and families, Mr. Grossi exemplifies the qualities of service and support the award celebrates.



Employees receiving service awards with President and CEO David Caprio, and Board Chairman William J. Allen.



# KICK OFF!

Join us as we paint the town red to kick off this year's *Spirit of Giving* Holiday Drive!

**THURSDAY • NOVEMBER 7, 2019**  
**5:30 PM - 8:00 PM**  
**DOOR PRIZES • FREE APPETIZERS • CASH BAR**

Skyline at Waterplace  
1 Finance Way • Providence, RI 02903

Cash Valet Service Available at Skyline  
Free Two Hour Parking Available at Providence Place

Learn more about Children's Friend and the 2019 Spirit of Giving Holiday Drive.

Pass the word and bring a friend along!

Please R.S.V.P. to Wendy King at 401.276.4328  
or [wking@cfsri.org](mailto:wking@cfsri.org) by November 6, 2019.